

## FeedWatch by VAS

Zach Myers  
Myers Dairy, Inc.  
Jonesville, NC

## History of Myers Dairy, Inc.

- ▶ Started in 1948
- ▶ 2<sup>nd</sup> Generation, 1970
  - Increased herd size from 100+ to 650 in two main expansions
- ▶ 3<sup>rd</sup> Generation, 2004
  - Increase herd size from 650 to 900 plus 200 feeder steers

## Myers Dairy, Inc.

- ▶ 900 head total milking 765 3X
- ▶ Double 16 parallel parlor
- ▶ ~26,000# rolling herd average
- ▶ 26% rolling pregnancy rate

## FeedWatch v2.03.46

- ▶ Feed Management Software by VAS
- ▶ Scale head and computer wirelessly connected
- ▶ All changes made on computer and sent to truck
- ▶ Numerous reports can be generated and customized

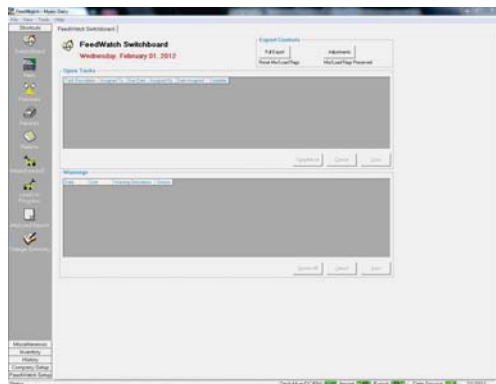
## Feed Truck



## Scale Head



## Home Page

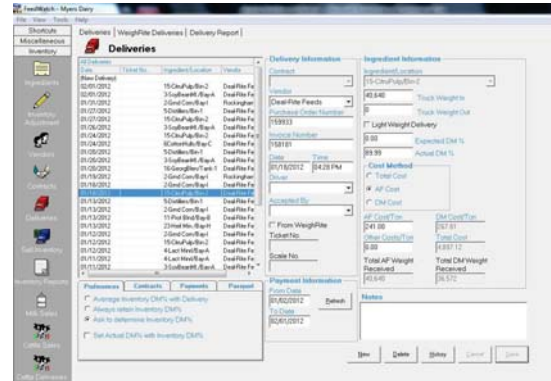


## Advantages

- ▶ Inventory tracking
- ▶ Ingredient tolerances
- ▶ Employee incentive
- ▶ Reports

# Inventory Tracking

# Inventory Tracking



# Inventory Tracking

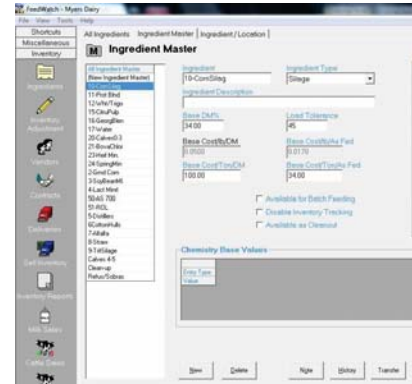
# Inventory Tracking and Time Stamped Data

Ingredient	Location	AF Type	Cost/oz	Value	Usage/oz	Days Left
<b>Total</b>						
20Canned	Fac Cases		1363.72	6252.71	672.76	9.2
<b>Total</b>						
21Bread	Fac 2		46.91	8427.89	626.18	13.1
<b>Total</b>						
22Dried	Fac 2		1	8788.42	8788.42	9.9
<b>Total</b>						
23Spice	Fac 2		1	8676.76	8676.76	0.09
<b>Total</b>						
24Lard	Fac 2		66	6297.36	89336.44	3.17
<b>Total</b>						
25Salt	Fac 2		15	8363.81	85424.17	2.57
<b>Total</b>						
4Lard Med	Fac 2		10.36	8377.34	83477.34	1.82
<b>Total</b>						
10Salt 50	Fac 2		41.87	41136.98	41147.48	0.9

Date	Mix Name	Recipe	Start Time	Expected AF Qty	Variance Qty
<b>Total</b>					
02/01/2012	1st Pin 3-4		05:01:34 AM	10.500	.75
<b>Total</b>					
02/01/2012	1st Pin 3-4		05:01:34 AM	10.500	.75
<b>Total</b>					
02/01/2012	2nd Pin 3-7		05:01:34 AM	10.500	.75
<b>Total</b>					
02/01/2012	Group 3-10		05:01:34 AM	10.500	.75
<b>Total</b>					
02/01/2012	1st Pin 3-1		05:01:34 AM	10.500	.75
<b>Total</b>					
02/01/2012	2nd Pin 2-5		05:01:34 AM	10.500	.75
<b>Total</b>					
02/01/2012	1st Pin 3-4		05:01:34 AM	10.500	.75
<b>Total</b>					

# Ingredient Tolerances

# Ingredient Tolerances



# Employee Incentive

# Ingredient Incentives

Calculate Employee Incentives | Incentive Setup |

### Calculate Employee Incentives

From Date: 01/13/2012  
To Date: 01/26/2012  
Employee: Lopez, Jorge  
 Show Details

Employee Incentives 12/31/2011 - 01/31/2012					
<b>Lopez, Jorge</b>					
			<b>Items</b>	<b>Net</b>	
			Ingredient Incentive	1,051	105.10
			Ingredient Penalty	72	-18.00
			Drop Incentive	137	13.70
			Drop Penalty	72	-18.00
<b>\$82.80 Total Incentive for Lopez, Jorge</b>					
Ingredient Incentive Details					
Date/Time	Ingredient/Location	Expected Qty	Actual Qty	Variance	Tolerance
01/26/2012 10:21 AM	11 Prot Bin/Bay-B	103	105	2	5
01/26/2012 10:19 AM	5 Durr/Bay-1	726	722	-4	3
01/26/2012 10:12 AM	2 Gnd Conv/Bay-1	796	807	11	6
01/26/2012 10:11 AM	4 Last Mind/Bay-A	430	432	2	5
01/26/2012 10:09 AM	3 Soy/Bay-M/Bay-A	541	535	-6	5
01/26/2012 10:08 AM	15 ChnFup/Bin-2	780	776	-4	3
01/26/2012 10:06 AM	16 Georg/Blev/Tank-1	226	223	-3	2
01/26/2012 09:46 AM	10 ComSag/Bunker-3	3,066	3,021	-45	45
01/26/2012 09:43 AM	9 TrfSlee/Bunker-4	1,124	1,093	-31	30

# Ingredient Penalties

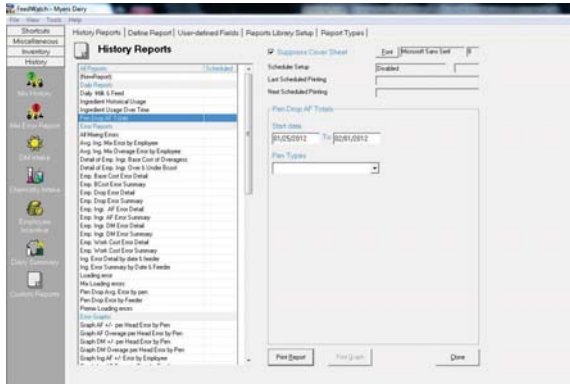
Calculate Employee Incentives | Incentive Setup | Calculate Employee Incentives

Employee Incentives 12/31/2011 - 01/31/2012

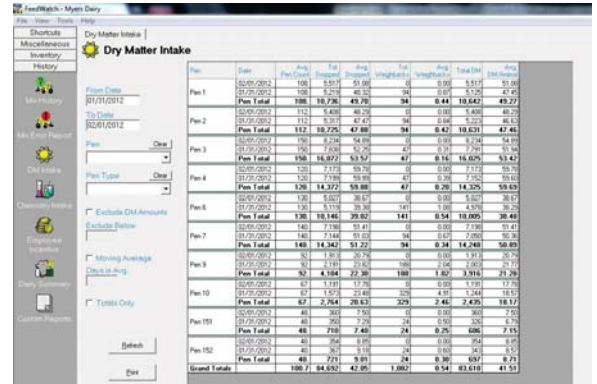
Ingredient Penalty Details					
Date/Time	Ingredient/Location	Expected Qty	Actual Qty	Variance	Tolerance
01/26/2012 05:50 AM	15-ClinPulp/Bm-2	714	723	9	3
01/25/2012 08:34 AM	8-Straw/Bay-D	624	643	19	3
01/25/2012 08:31 AM	24-SprngMn/Bay-H	48	64	16	2
01/25/2012 05:20 AM	9-TrtSlag/Bunker-4	757	809	52	30
01/25/2012 05:15 AM	17-Water/Hydant	1,022	1,068	46	9
01/25/2012 04:28 AM	10-ComSlag/Bunker-3	4,710	4,761	51	45
01/24/2012 09:53 AM	2-Grnd Com/Bay-H	796	821	25	6
01/24/2012 08:57 AM	8-Straw/Bay-D	499	500	9	3
01/24/2012 08:55 AM	3-Soy/BearM/Bay-A	261	342	81	5
01/24/2012 08:02 AM	9-TrtSlag/Bunker-4	162	210	48	30
01/24/2012 06:59 AM	9-TrtSlag/Bunker-4	792	833	41	30

# Reports

# Reports



# Custom Reports



## Disadvantages

- ▶ Difficult to learn
- ▶ Cannot make ration changes at scale head
- ▶ Technical Support is in Tulare, CA

## Dedicatedtodairy.com

