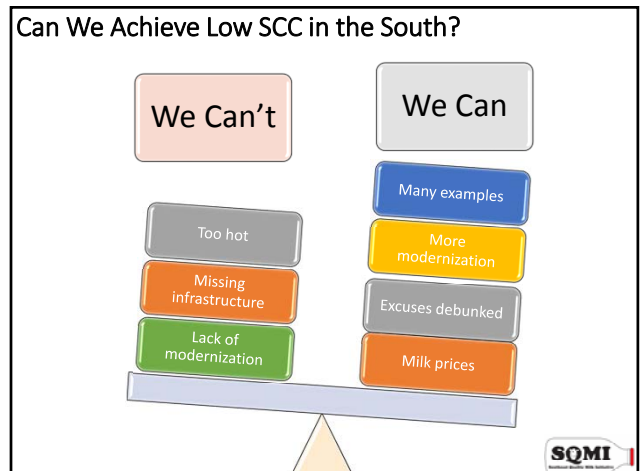
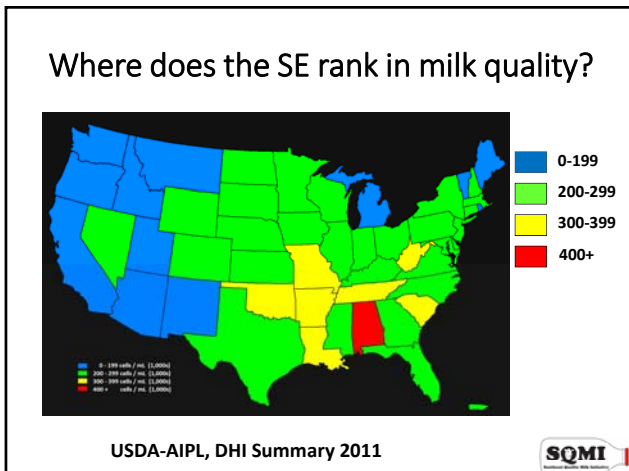
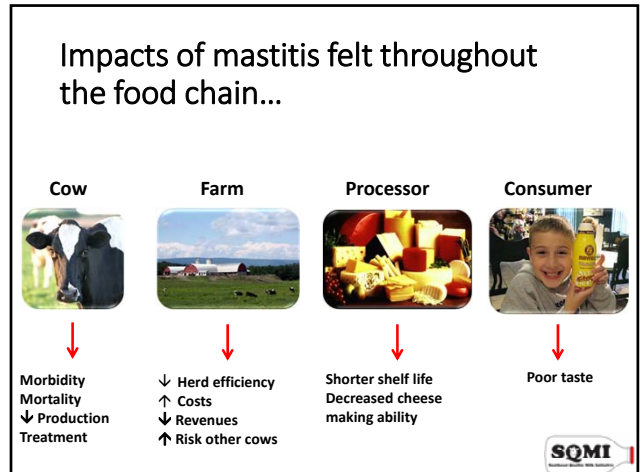




Milk Quality Observations from 300 Farm Visits

Goal: Improve milk quality and help make SE dairy industry sustainable

Objective 1:
Discover why practices are adopted (or why not)?

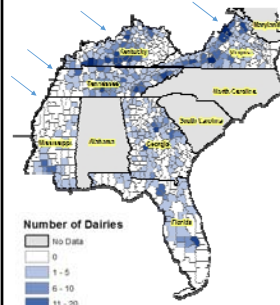
Objective 2:
Discover what practices are effective in the Southeast

Objective 3:
Create tools and services to help producers make informed decisions

Objective 4:
Create educational programs for current and future generations



On-Farm Evaluations



- 283 visits in 4 states:
 - KY (n = 96)
 - MS (n = 7)
 - TN (n = 84)
 - VA (n = 96)
- Spread over 1 year:
 - 6/21/2014 to 6/20/2015
- Spread across SCC groups:
 - Low SCC: <190,000
 - Med. SCC: 190,000 – 260,000
 - High SCC: >260,000



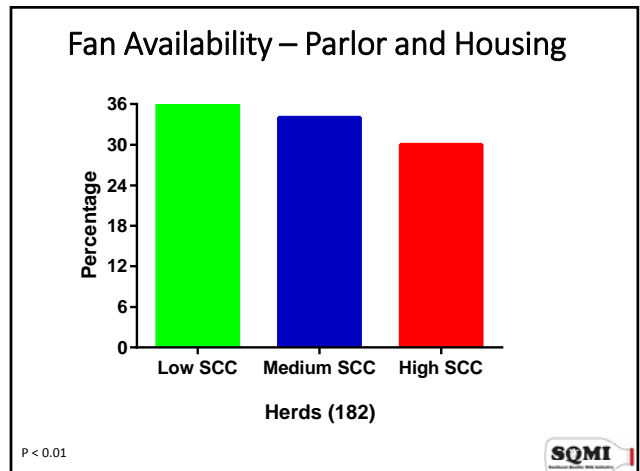
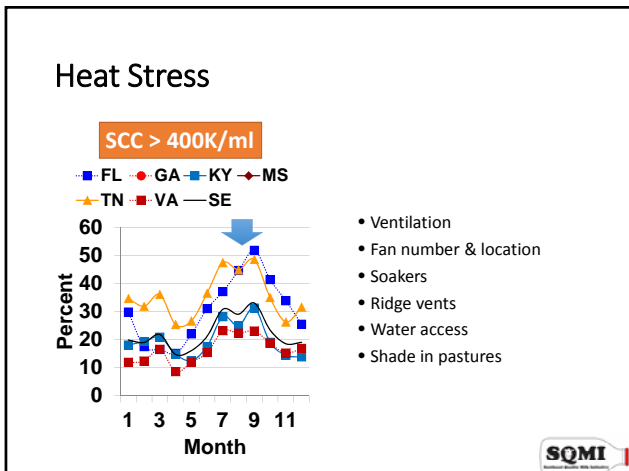
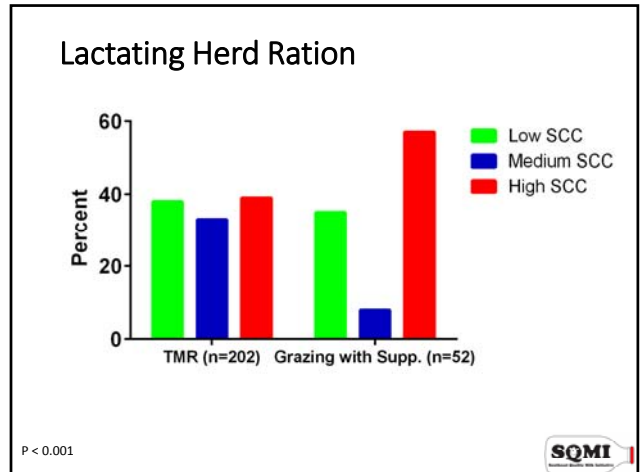
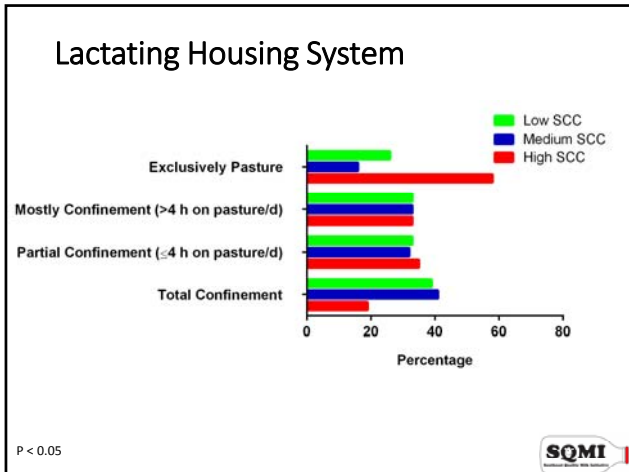
On Farm Assessments

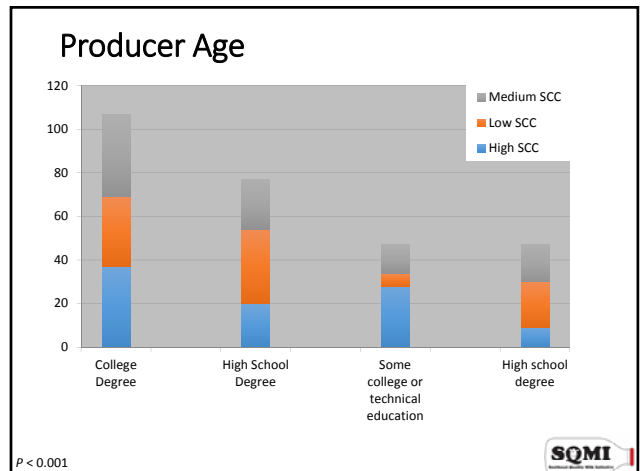
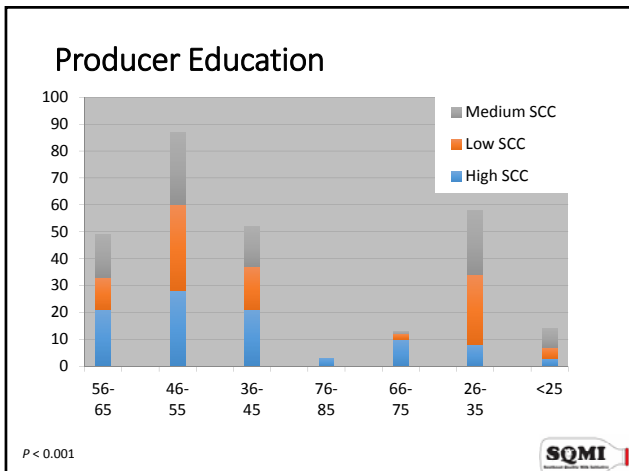
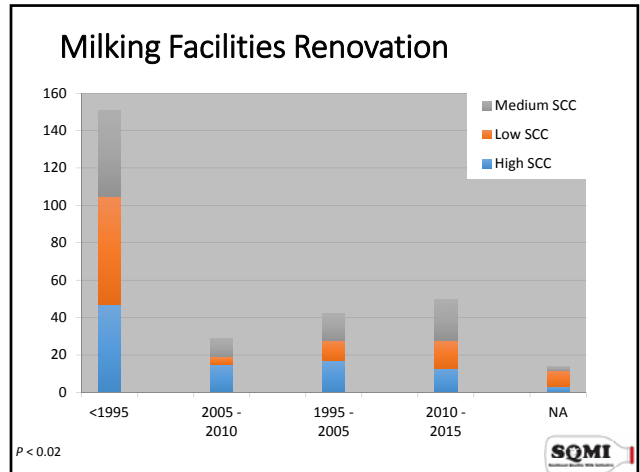
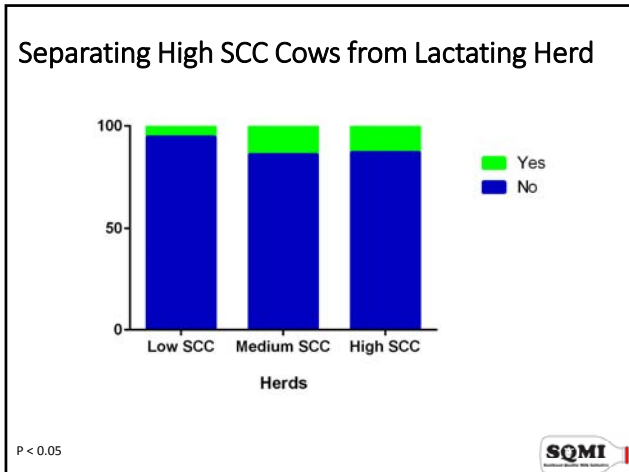
- On farm evaluation
 - Questionnaire
 - Milking system evaluation
 - Housing system evaluation
 - SOPs
 - Training of teams from different states
- Bulk tank
 - Samples will be analyzed by CO-OPs normal lab, but with extras

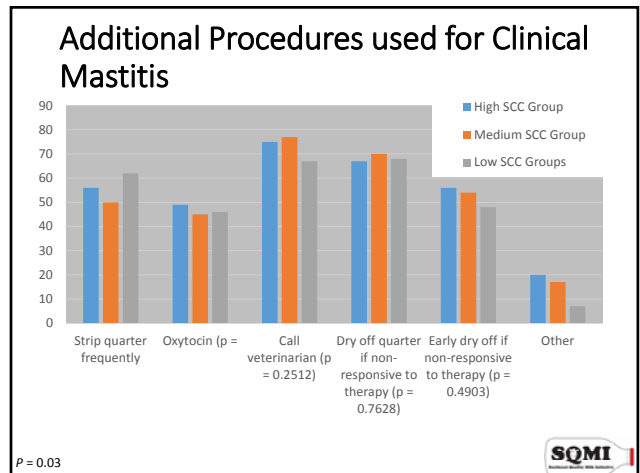
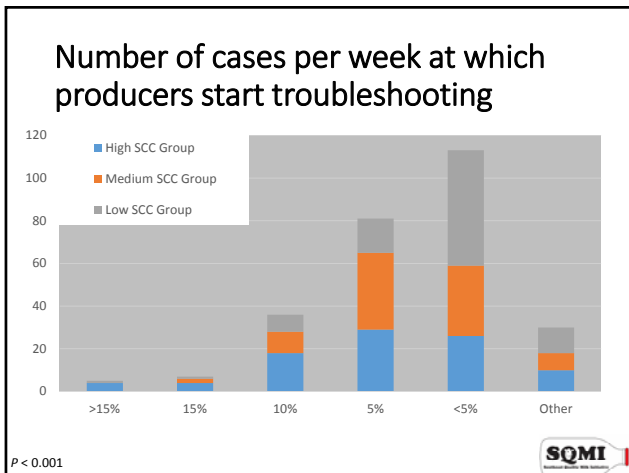
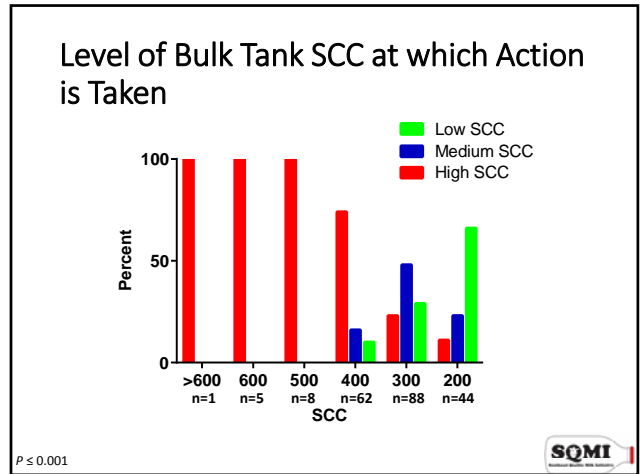
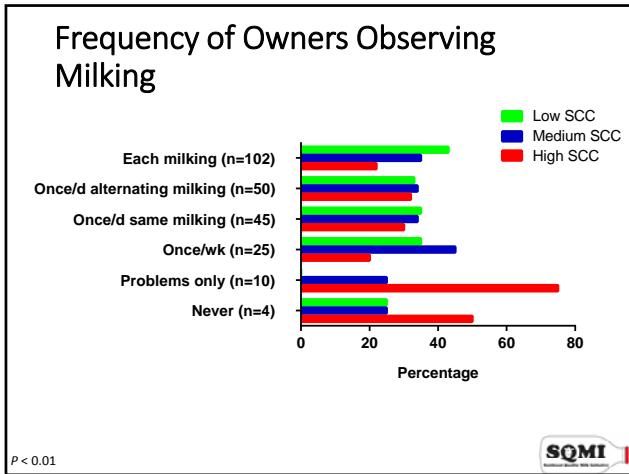


How do housing and milking management factors impact bulk tank SCC?









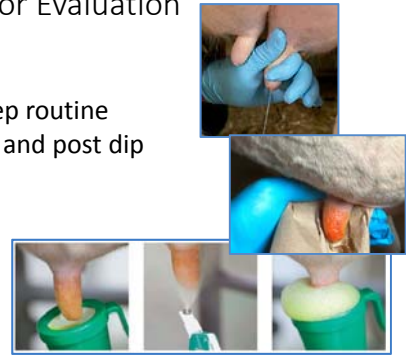
Having an impact

- Appreciated having team members on site
- Immediate feedback & follow-up reports → Made corrections in real time
- Requests for follow-ups and new people wanting to participate → Resources are our challenge
 - 9 farms each in TN, KY, VA and 3 farms in KY → Demonstration farms early next year

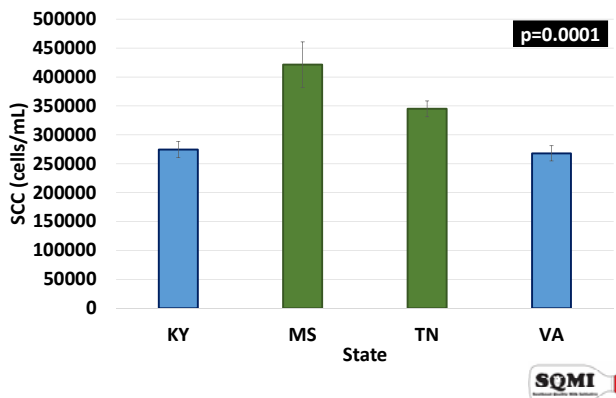


Milking Parlor Evaluation

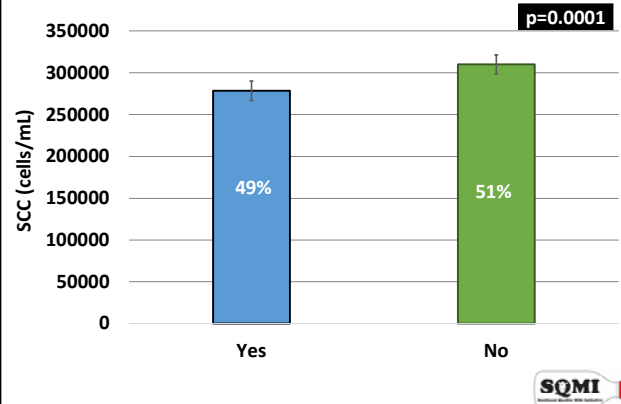
- Procedure
 - Steps of prep routine
 - Type of pre and post dip
- Timing
 - Kill Time
 - Prep Lag

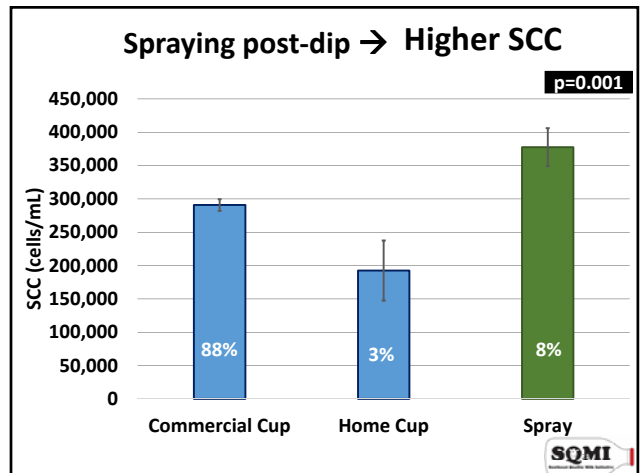
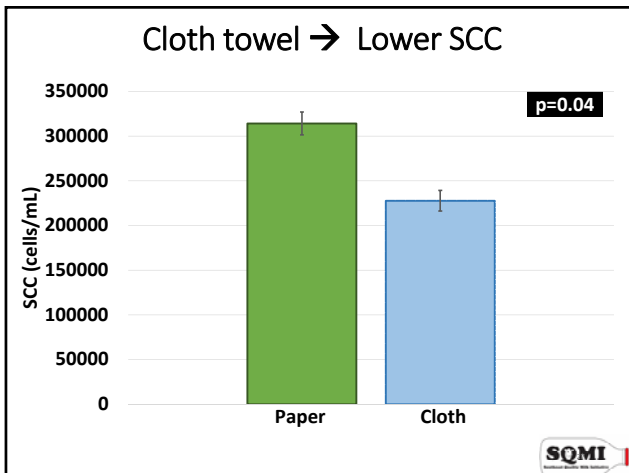
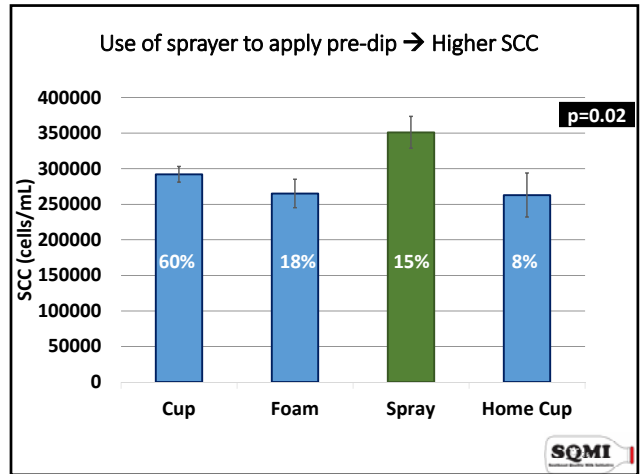
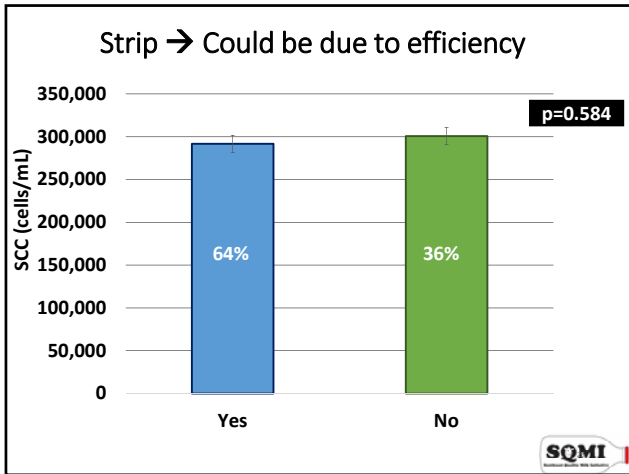


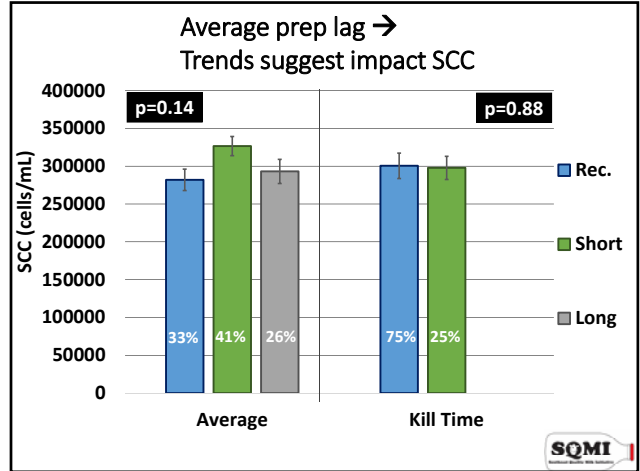
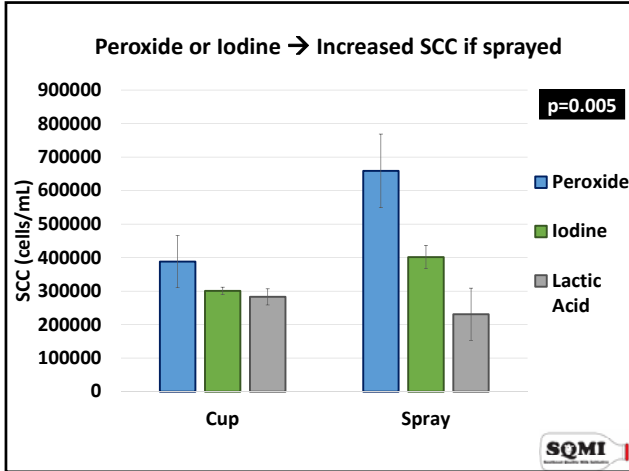
State association with SCC



Single or Clip Udders → Lower SCC







Early lessons

- Great herds → Good practices, continually looking for ways to improve, paid attention to detail
- Good herds → Mostly good practices, but had several issues
- Greatest opportunity herds → Few good practices, had multiple issues

Challenges???

Opportunities???

SQMI

Take Home Points

- SCC association
 - State
 - Udder hair mgmt.
 - Towel type
 - Dip application
 - Type of post dip
- Further analysis to look at influencing factors
- Communicating information → key to influencing MQ

USDA-NIFA-AFRI (2013-68004-20424)

SQMI